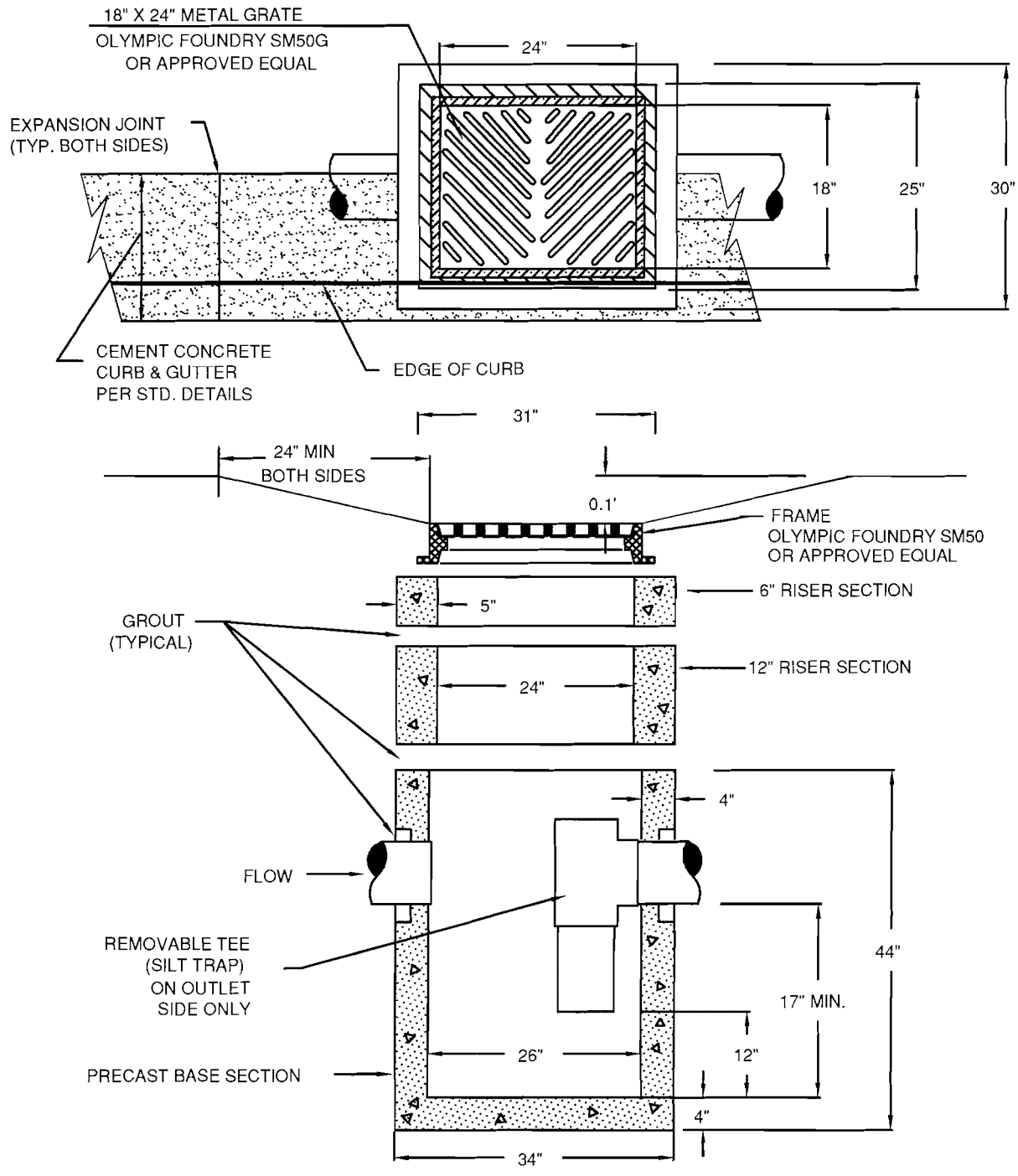


T:\Custom\Details\City of Winlock\Details\ErosionControl.dwg, 3-1.ch, 8/20/2007 3:54:04 PM, DFrye, DWFB ePlot.pc3, Gibbs & Olson - Report A Size (8.50 x 11.00 inches), 1:1, Gibbs & Olson, Inc.



NOTES:

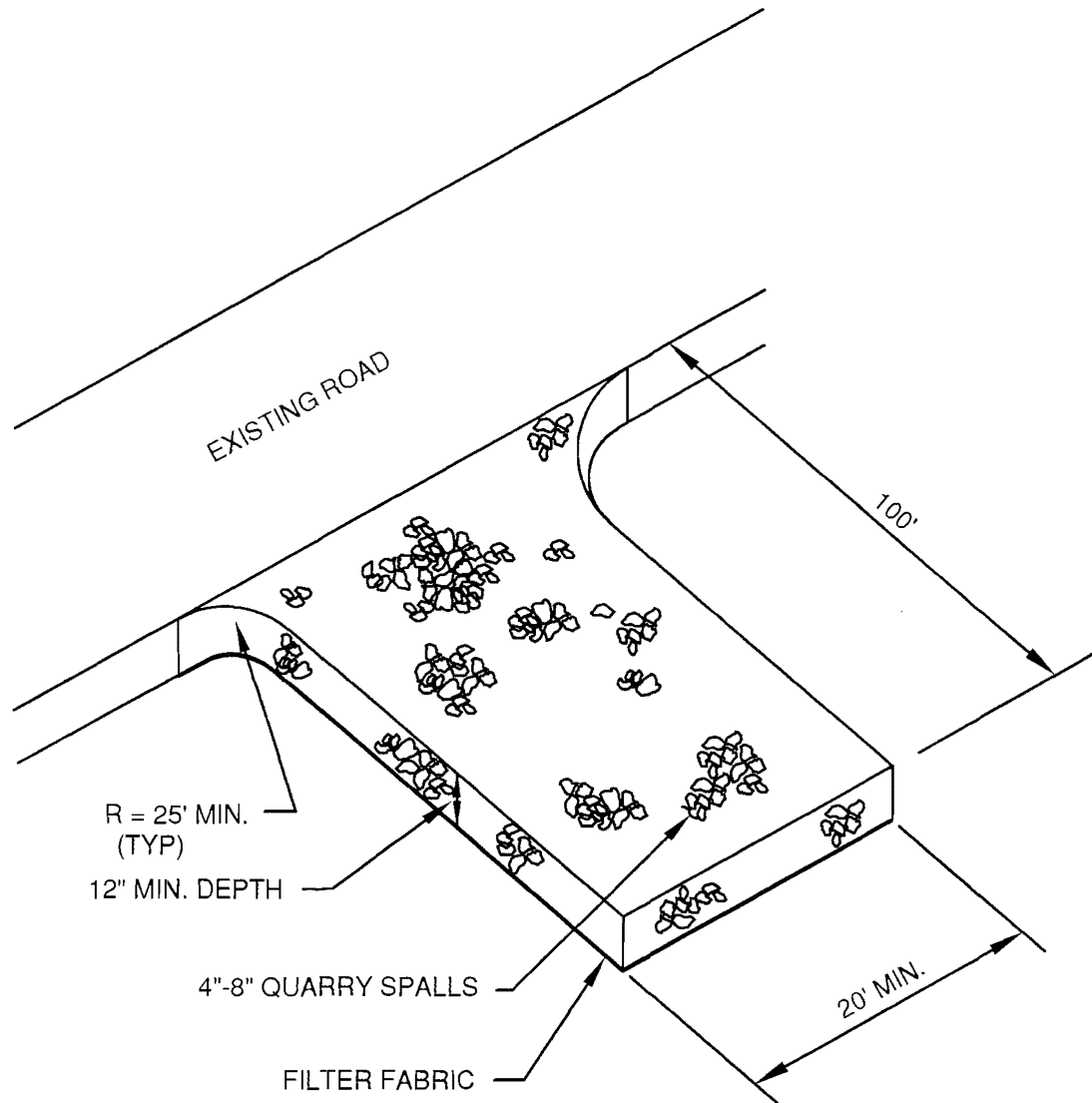
1. CATCH BASIN SHALL BE CONSTRUCTED IN ACCORDANCE WITH SPECIFICATIONS IN WSDOT STANDARD PLAN B-5.20-00.
2. OLYMPIC FOUNDRY GRATES SM50VG OR SM50S (OR APPROVED EQUAL), MAY BE REQUIRED WHEN CONDITIONS WARRANT, AS OTHERWISE DETERMINED BY THE CITY.

DRAWING NOT TO SCALE



CITY OF WINLOCK DEPARTMENT OF PUBLIC WORKS	EROSION CONTROL DETAILS CATCH BASIN WITH SILT TRAP TEE	REVISED 08/20/2007	DRAWING NO. 3-1
--	--	------------------------------	----------------------------------

T:\Custom\Details\City of Winlock\Details\ErosionControl.dwg, 9/20/2007 3:54:05 PM, D:\Frye, DW\Frye.dwg, Gibbs & Olson - Report A Size (8.50 x 11.00 Inches), 1, Gibbs & Olson, Inc.



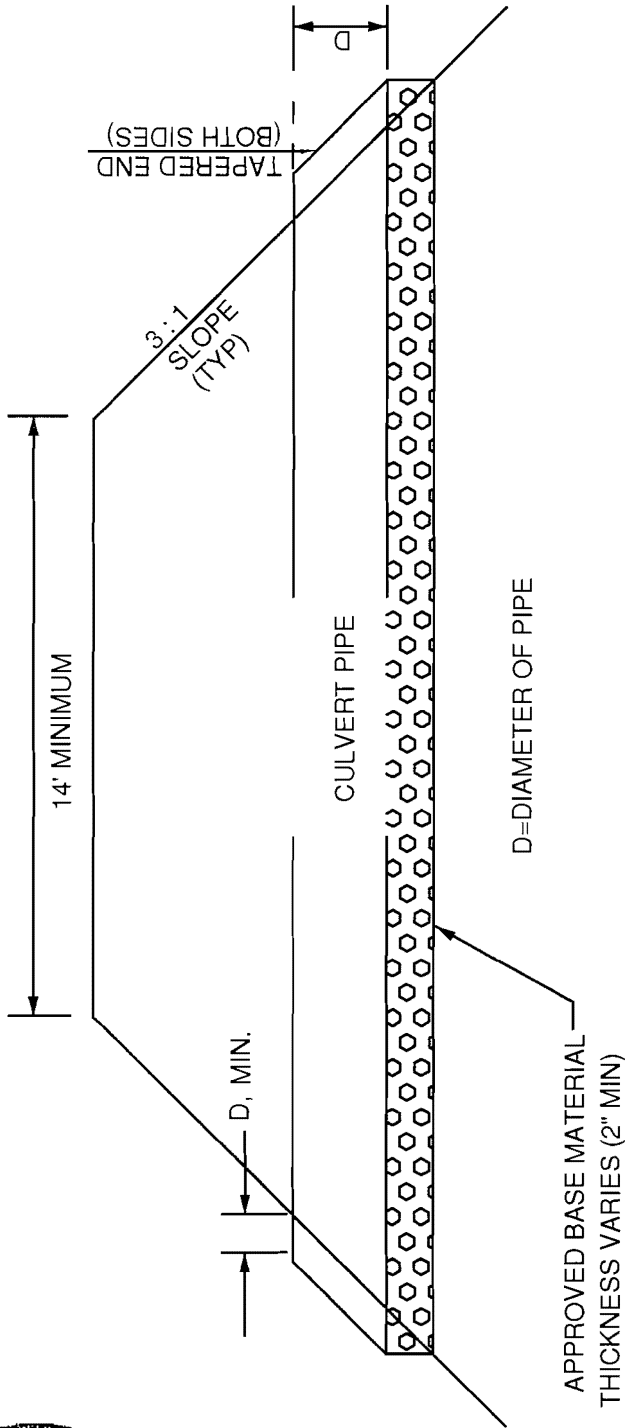
DRAWING NOT TO SCALE

CITY OF WINLOCK
DEPARTMENT OF PUBLIC WORKS

EROSION CONTROL DETAILS
STABILIZED CONSTRUCTION
ENTRANCE

REVISED
08/20/2007

DRAWING
NO.
3-2



ACCEPTABLE TYPES OF CULVERT PIPES ARE: SMOOTH WALL ADS
 PVC
 CONCRETE PIPE

NOTES:

1. IF CULVERT IS BEING CONNECTED TO AN EXISTING CLOSED CONVEYANCE SYSTEM, CULVERT MATERIAL & METHOD OF CONNECTION MUST BE APPROVED BY THE PUBLIC WORKS DEPARTMENT.
2. SEE SECTION 3A.03 FOR INFORMATION REGARDING PIPE TYPE AND SIZING.
3. IF CONDITIONS WARRANT, ARMORING OF CULVERT ENDS WITH RIP RAP MAY BE REQUIRED BY CITY TO MAINTAIN SLOPE STABILITY.

CITY OF WINLOCK
 DEPARTMENT OF PUBLIC WORKS

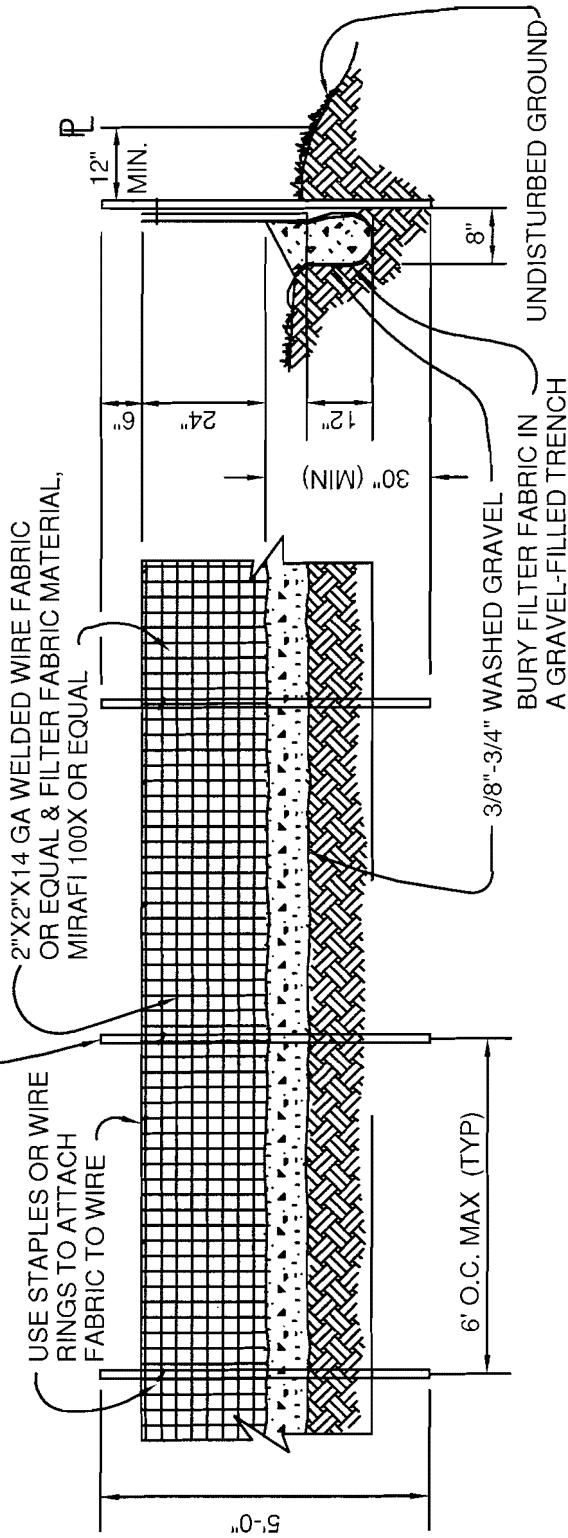
EROSION CONTROL DETAILS
 DRIVEWAY CULVERT

REVISED
 08/20/2007

DRAWING
 NO.
3-3



2" X 2" WOOD POSTS (UNTREATED),
STEEL FENCE POSTS, OR APPROVED EQUAL.



NOTES:

1. FILTER FABRIC SHALL BE PURCHASED IN A CONTINUOUS ROLL CUT TO THE LENGTH OF THE BARRIER TO AVOID USE OF JOINTS. WHEN JOINTS ARE NECESSARY, FILTER CLOTH SHALL BE SPLICED TOGETHER ONLY AT A SUPPORT POST, WITH MINIMUM 6-INCH OVERLAP, AND SECURELY FASTENED @ BOTH ENDS.
2. A WIRE MESH SUPPORT FENCE SHALL BE FASTENED SECURELY TO THE UPSLOPE SIDE OF THE POSTS USING HEAVY-DUTY WIRE STAPLES AT LEAST 1-INCH LONG, TIE WIRES, OR HOG RINGS. THE WIRE WILL EXTEND INTO THE TRENCH A MINIMUM OF 4 INCHES & SHALL NOT EXTEND MORE THAN 24 INCHES ABOVE THE ORIGINAL GROUND SURFACE.
3. WHEN EXTRA-STRENGTH FILTER FABRIC & 4-FOOT MAXIMUM POST SPACING IS USED, THE WIRE MESH FENCE MAY BE ELIMINATED. IN SUCH CASES, THE FILTER FABRIC WILL BE STAPLED OR WIRED DIRECTLY TO THE POSTS W/ ALL OTHER PROVISIONS STILL APPLYING.
4. SILT FENCE SHALL NOT BE MOVED BEFORE THE UPSLOPE AREA HAS BEEN PERMANENTLY STABILIZED.
5. SILT FENCING SHALL BE INSPECTED IMMEDIATELY AFTER EACH RAINFALL & AT LEAST DAILY DURING PROLONGED RAINFALL. ANY REQUIRED REPAIRS SHALL BE MADE IMMEDIATELY.

DRAWING NOT TO SCALE

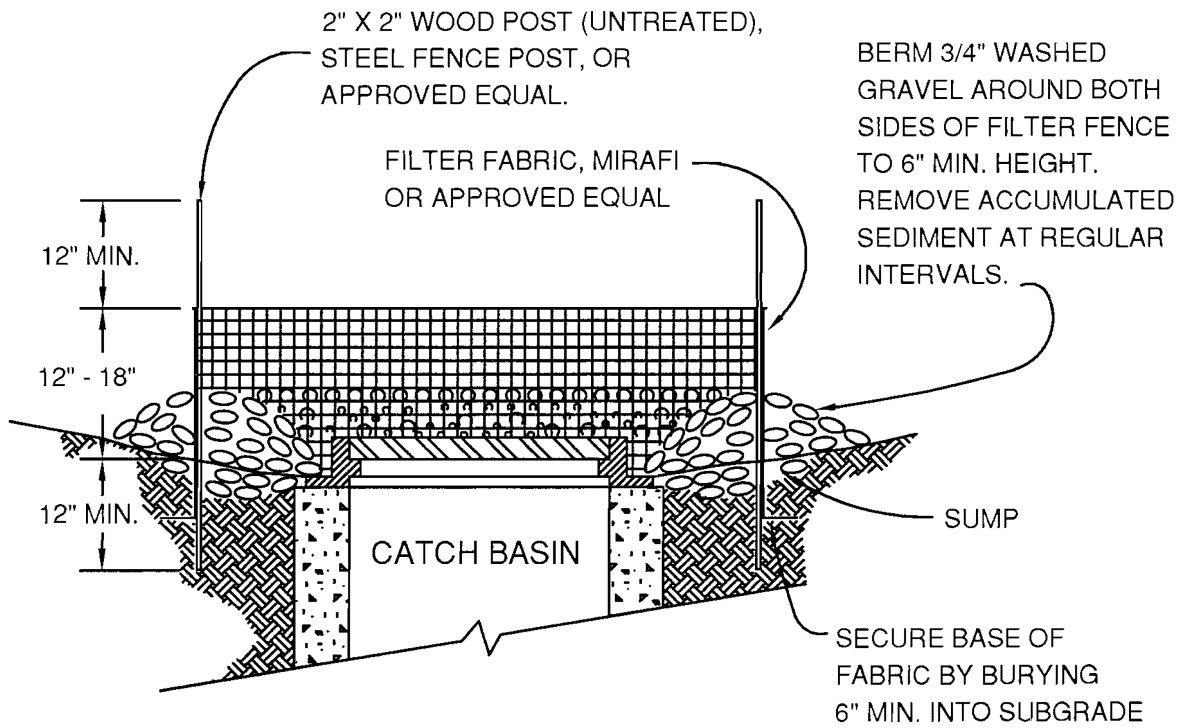
CITY OF WINLOCK
DEPARTMENT OF PUBLIC WORKS

EROSION CONTROL DETAILS
TEMPORARY SILT FENCE

REVISED
08/20/2007

DRAWING
NO.
3-4

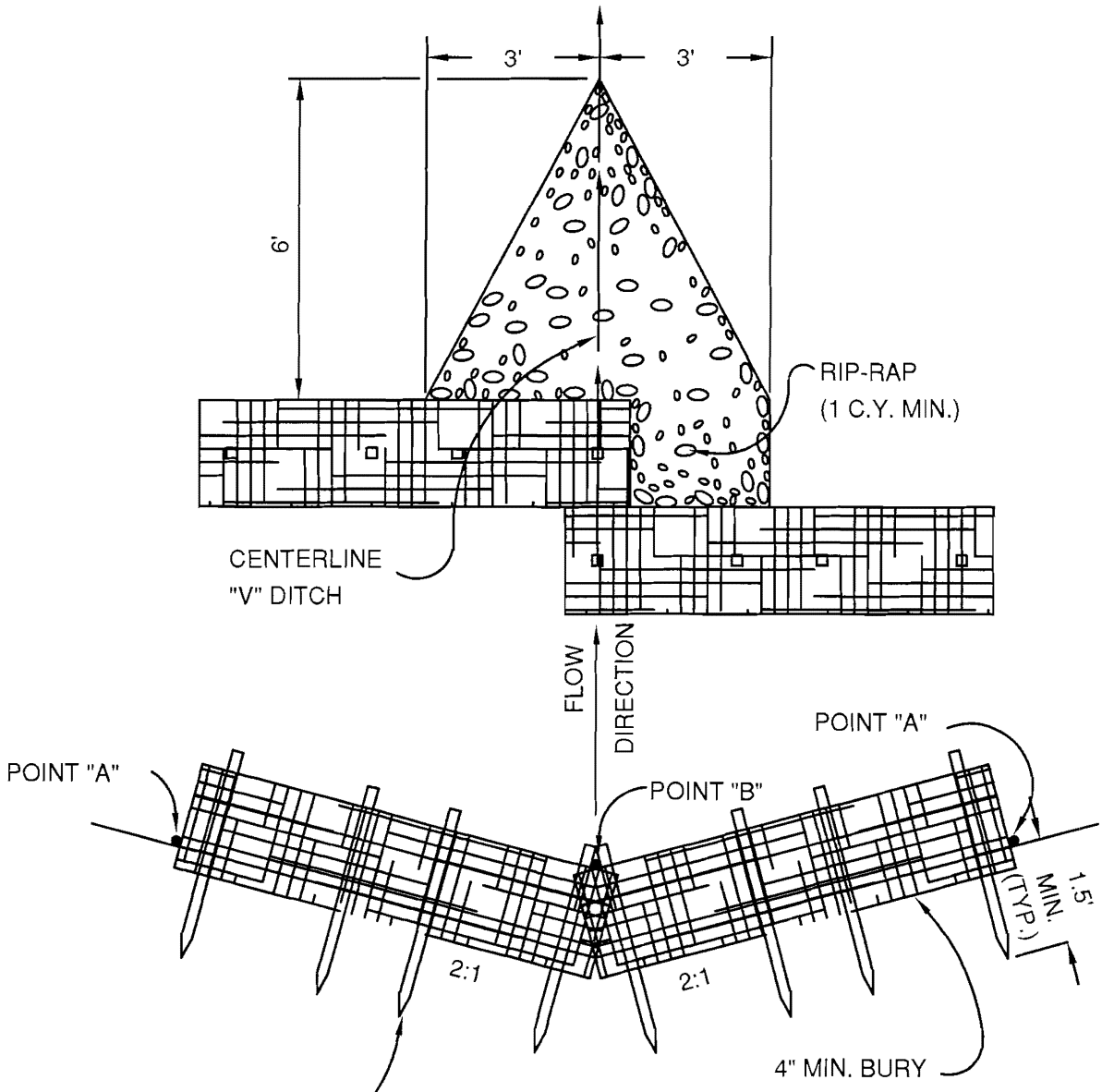
T:\Custom\Details\City of Winlock\Details\ErosionControl.dwg, 3-5-lllterch, 8/20/2007 3:54:07 PM, D\Frye, DW\F6 ePlat.pcs, Gibbs & Olson - Report A Size (6.50 x 11.00 inches), 1:1, Gibbs & Olson, Inc.



DRAWING NOT TO SCALE

CITY OF WINLOCK DEPARTMENT OF PUBLIC WORKS	EROSION CONTROL DETAILS FILTER FABRIC CATCH BASIN PROTECTION	REVISED 08/20/2007	DRAWING NO. 3-5

T:\Custom\Details\City of Winlock\Details\ErosionControl.dwg, 3-8-dam, 8/20/2007 3:54:07 PM, DFrye, DWF6 ePlot.pc3, Gibbs & Olson - Report A Size (8.50 x 11.00 inches), 1:1, Gibbs & Olson, Inc.



#4 REBAR OR 2" X 2"
WOOD STAKES

NOTE: POINTS "A"
MUST BE HIGHER
THAN POINT "B"



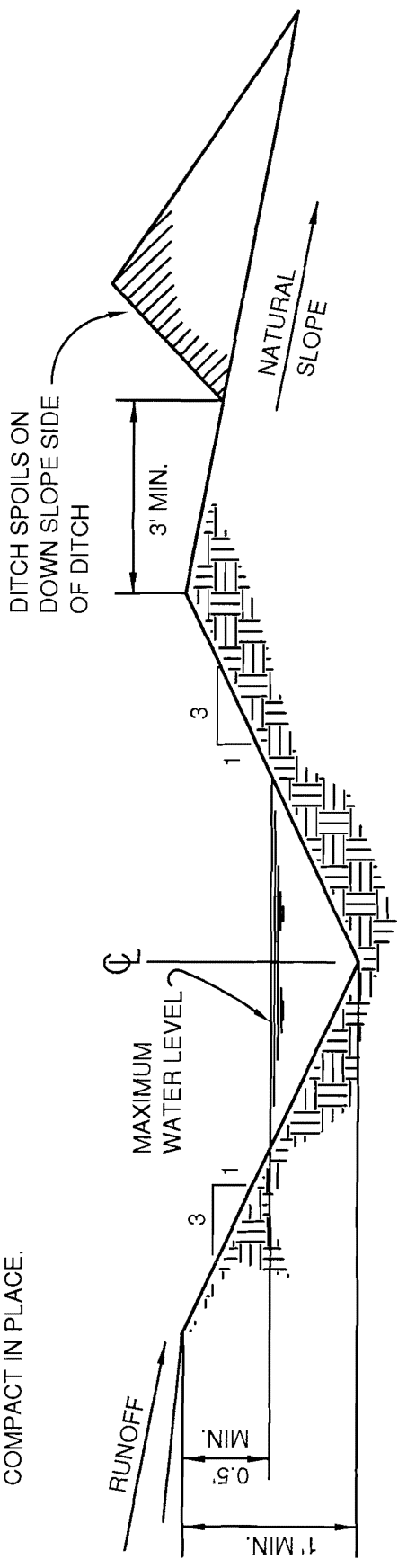
DRAWING NOT TO SCALE

<p>CITY OF WINLOCK DEPARTMENT OF PUBLIC WORKS</p>	<p>EROSION CONTROL DETAILS TEMPORARY STRAWBALE CHECK DAM</p>	<p>REVISED 08/20/2007</p>	<p>DRAWING NO. 3-6</p>
--	--	-------------------------------	--------------------------------

T:\Custom\Details\City of Winlock\Details\ErosionControl.dwg, 3-7-v, 8/20/2007 3:54:08 PM, D:\rye, DW\FE e\Flet, pc3, Gibbs & Olson - Report A Size (8.50 x 11.00 inches), 1:1, Gibbs & Olson, Inc.



PLACE V-DITCH EXCAVATION
SPOILS ON DOWNHILL SLOPE,
COMPACT IN PLACE.



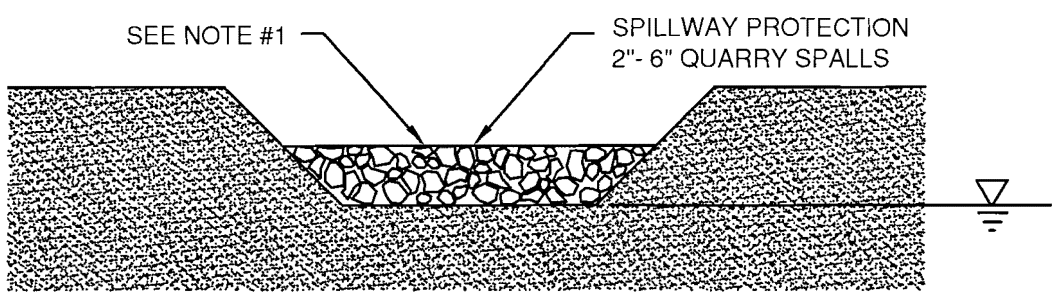
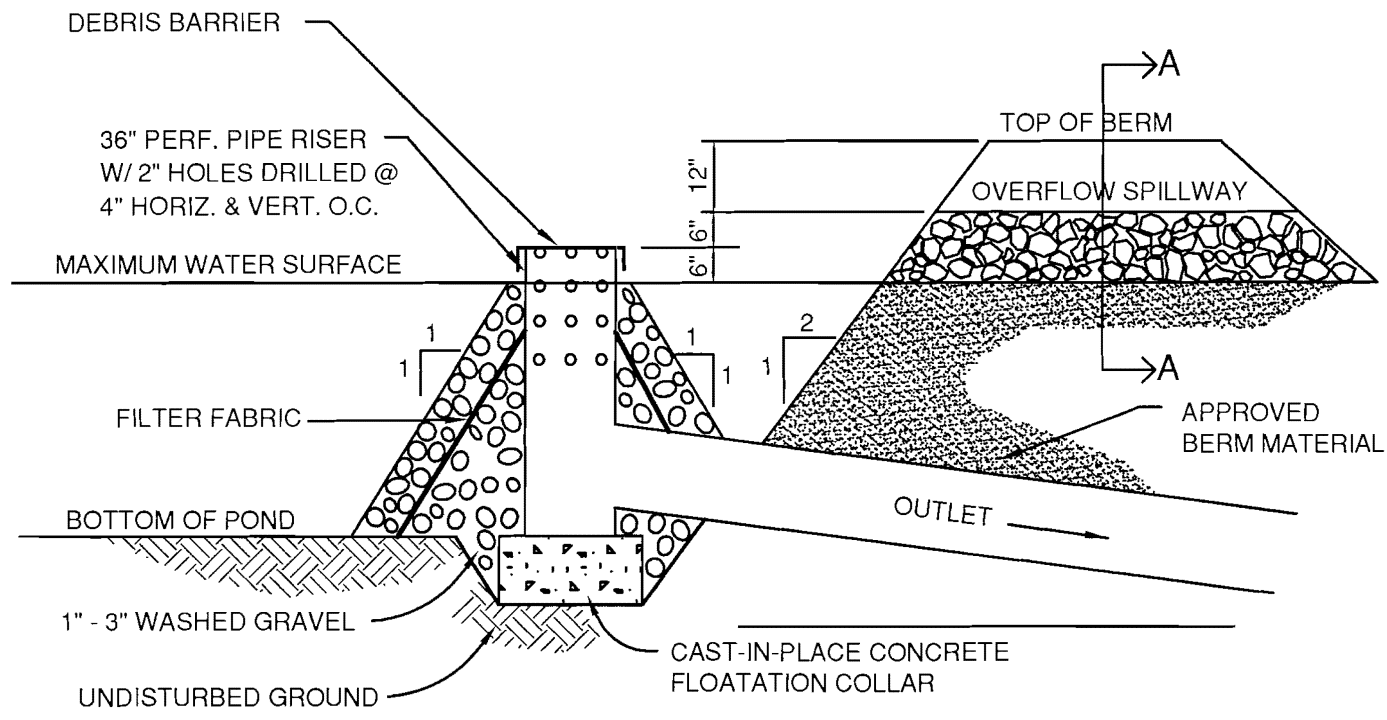
DRAWING NOT TO SCALE

CITY OF WINLOCK
DEPARTMENT OF PUBLIC WORKS

EROSION CONTROL DETAILS
TEMPORARY "V" DITCH

REVISED
08/20/2007

DRAWING
NO.
3-7



SECTION A-A

NOTES:

1. POND, OUTLET, & SPILLWAY DIMENSIONS TO BE DESIGNED BY AN ENGINEER LICENSED IN THE STATE OF WASHINGTON.
2. ALL DIMENSIONS SHOWN ON DETAIL ARE MINIMUMS.
3. OUTLET SIDE OF BERM TO BE ARMORED WITH QUARRY SPALLS FOR WIDTH OF SPILLWAY.



DRAWING NOT TO SCALE

CITY OF WINLOCK DEPARTMENT OF PUBLIC WORKS	EROSION CONTROL DETAILS GRAVEL CONE WITH RISER	REVISED 08/20/2007	DRAWING NO. 3-8
--	---	-----------------------	------------------------------

T:\Custom\Details\City of Winlock\Details\ErosionControl.dwg, 3-8-conc, 8/20/2007 3:54:09 PM, D:\rye, DWG6 ePlot.pc3, Gibbs & Olson - Report A Size (8.50 x 11.00 inches), 1:1, Gibbs & Olson, Inc.